

Section 14 of the Road Traffic Regulation Act 1984

Urgent Closure of: B4042 (part), Malmesbury

WILTSHIRE COUNCIL HEREBY GIVE NOTICE that on 29th September 2025, the following length of road shall be closed to all traffic in the interests of public safety to enable Wiltshire Council to carry out carriageway patching and other associated maintenance works.

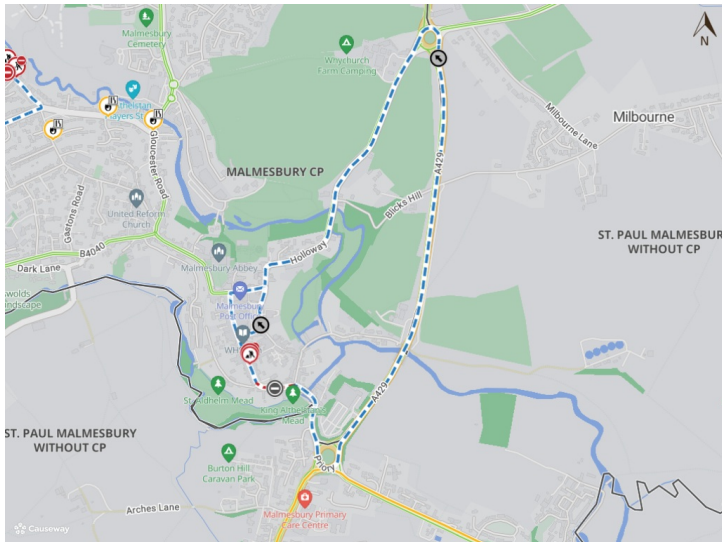
B4042 (part), Malmesbury; from its junction with Saint John's Street to its junction with King's Wall.

Alternative route: via B4042 unaffected length, B4040, A429, and vice versa.

The closure and diversion route will be clearly indicated by traffic signs. Access will be maintained for residents and businesses where possible, although delays are likely due to the nature of the works.

These works will commence on 29th September 2025 and are anticipated to be required for one night between the hours of 19:00 and 23:59. This Notice will have a maximum duration of 5 days.

For further information regarding these works please contact M Group on behalf of Wiltshire Council on 07743984583.



Imagery © 2025 [MapTiler](#) | Imagery © 2025 [Hexagon](#) | © [MapTiler](#) © [OpenStreetMap contributors](#)

Highways Assets and Commissioning, County Hall, Bythesea Road, Trowbridge BA14 8JN

REF:26BOB96